

TAMCO

SWITCH TO QUALITY AND PERFORMANCE

KONTROL 5000

Low Voltage Main Switchboard and Motor Control Centre

The benefits of Kontrol 5000

When you specify the Kontrol 5000, designed and manufactured in Australia by Tamco Electrical Industries, you'll gain a range of benefits, including:

Quality & Reliability

Performance assured, the Kontrol 5000 carries ASTA type test certificates and meets or exceeds Australian Standards AS3439.1 (1993), IEC 439.1 (1992) BS EN 60439.1 (1994).

Versatility

Suitable for a range of applications, the basic unit is extendable both ends and can be configured for individual applications with the options shown overleaf.

Simple installation and operation

Designed to reduce costs and increase productivity, the modular Kontrol 5000 features demountable, fully withdrawable modular motor drives and feeders for easy replacement.

Safety

Arc Fault containment testing to AS 3439.1 appendix "EE" ensures optimum safety.

Durability

Each modular cabinet is constructed from 2mm zinc steel with a 3mm formed base.



TAMCO ELECTRICAL INDUSTRIES AUSTRALIA

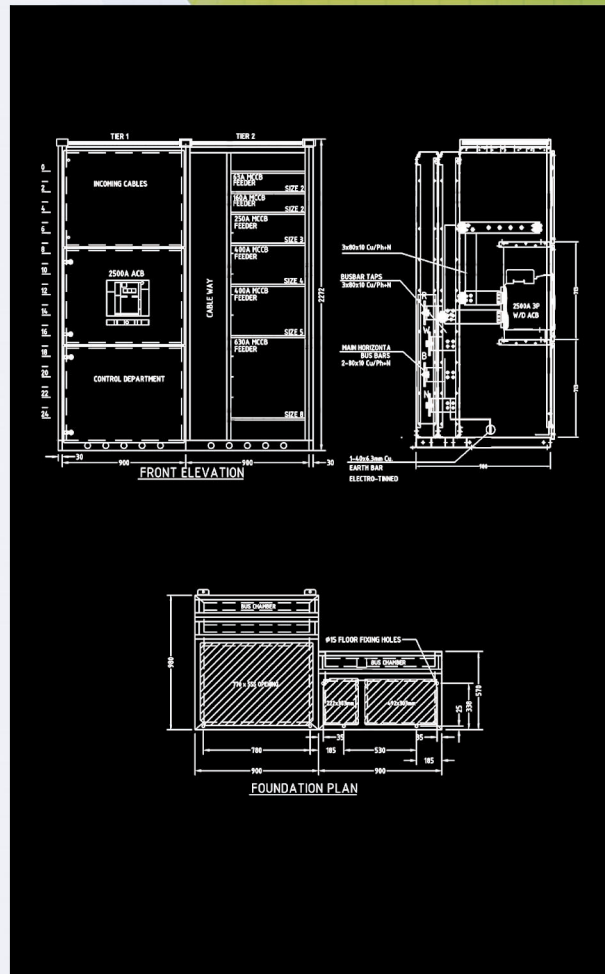
K5000 Low Voltage MSB and MCC

STANDARD INCLUSIONS

1. Form 3b, 4a/b construction
2. Extendable both ends
3. Painted with Polyester Electrostatic Powder Coat, RAL 7032 Stipple

OPTIONAL FEATURES

1. Extra wide Cableway 400mm
2. Form Rating of segregation – Form 2
3. a) IP54 Rating Indoor MCC
b) IP56 Rating Outdoor MCC
4. Insulation Voltage 1000V @ 50Hz
5. Main Bus Bar System can be fully insulated
6. Main Bus Bar System 7000A centre fed
7. Vertical Bus Bar available in 2000 Amp Rating
8. Other powder coating colours and finishes available
9. Stainless steel enclosure
10. Arc fault detection



Kontrol 5000

STANDARD CHARACTERISTICS	
1. Type	Indoor, single sided or back-to back design
2. Compliance with Standards	AS3439.1, IEC 60439.1, BS EN 60439.1
3. Number of phases	Up to 4
4. Number of poles	Up to 4
5. Rated frequency (Hz)	50
6. Rated Voltage (V)	415
7. Highest Voltage for equipment (V)	690
8. Rated Current of Main Bus Bar (A)	Up to 5000
9. Rated Current of Vertical Bus Bar (A)	Up to 1200
10. Short time Current for 1 second (kA)	100 (Vertical busbar 80kA/1sec, 100kA/0.5sec)
11. Short circuit capacity for 3 seconds (kA)	50
12. Minimum Impulse Voltage Withstand (kV)	6
13. Form of segregation	3b, 4
14. Degree of protection	IP42
15. Type of modules	Fixed; Demountable; Fully Withdrawable
16. Minimum module size	Size 1 (75mm high)
17. Diversity factor	1
18. Incoming/outgoing cable entry	Top/Bottom
19. Connections	From the front (MCC) from the back (MSB)
20. Tier Dimensions (mm)	900 (W), 2272 (H), 570 (980 back-to back) (D)

TEIA CONTACT POINTS

Telephone: +61 3 9706 7288
Facsimile: +61 3 9706 9112

sales@tamcoaustralia.com.au
www.tamcoaustralia.com.au